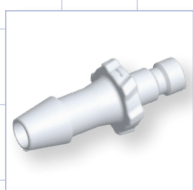
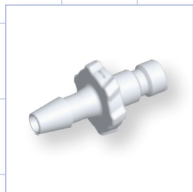
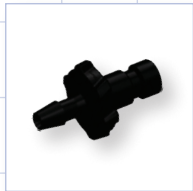
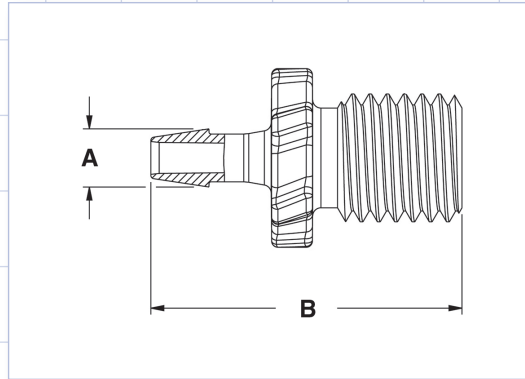


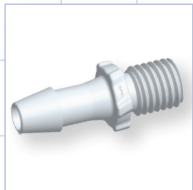
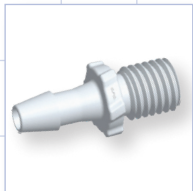
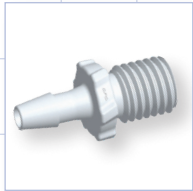
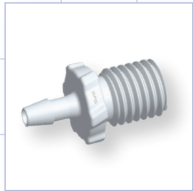
Bayonet Male



| Part Number | Description | Tubing Size | A | B | Material |
|-------------|---------------------------------------|-----------------------------------------------|--------------------|---------------------|----------|
| BC330 | Bayonet Male Connector, Barbed, White | Fits 3/32 inch ID Tubing (0.093 inch, 2.4 mm) | 0.14 inch (3.6 mm) | 0.73 inch (18.5 mm) | Nylon |
| BC331 | Bayonet Male Connector, Barbed, Black | Fits 3/32 inch ID Tubing (0.093 inch, 2.4 mm) | 0.14 inch (3.6 mm) | 0.73 inch (18.5 mm) | Nylon |
| BC430 | Bayonet Male Connector, Barbed, White | Fits 1/8 inch ID Tubing (0.125 inch, 3.2 mm) | 0.19 inch (4.8 mm) | 0.83 inch (21.1 mm) | Nylon |
| BC431 | Bayonet Male Connector, Barbed, Black | Fits 1/8 inch ID Tubing (0.125 inch, 3.2 mm) | 0.19 inch (4.8 mm) | 0.83 inch (21.1 mm) | Nylon |
| BC530 | Bayonet Male Connector, Barbed, White | Fits 5/32 inch ID Tubing (0.156 inch, 3.9 mm) | 0.23 inch (5.8 mm) | 0.92 inch (23.4 mm) | Nylon |
| BC531 | Bayonet Male Connector, Barbed, Black | Fits 5/32 inch ID Tubing (0.156 inch, 3.9 mm) | 0.23 inch (5.8 mm) | 0.92 inch (23.4 mm) | Nylon |
| BC630 | Bayonet Male Connector, Barbed, White | Fits 3/16 inch ID Tubing (0.187 inch, 4.7 mm) | 0.28 inch (7.1 mm) | 1.02 inch (25.9 mm) | Nylon |
| BC631 | Bayonet Male Connector, Barbed, Black | Fits 3/16 inch ID Tubing (0.187 inch, 4.7 mm) | 0.28 inch (7.1 mm) | 1.02 inch (25.9 mm) | Nylon |



Screw Type



| Part Number | Description | Tubing Size | A | B | Material |
|--------------|-----------------------------|---------------------------------------------------------------------|-----------------------|------------------------|----------|
| GS320 | Screw Type Connector, White | Fits 3/32 inch ID Tubing (0.093 inch, 2.4 mm) 5/16 UNF Thread | 0.14 inch (3.6 mm) | 0.75 inch (19.1 mm) | Acetal |
| GS420 | Screw Type Connector, White | Fits 1/8 inch ID Tubing (0.125 inch, 3.2 mm) 5/16 UNF Thread | 0.19 inch (4.8 mm) | 0.85 inch (21.6 mm) | Acetal |
| GS520 | Screw Type Connector, White | Fits 5/32 inch ID Tubing (0.156 inch, 3.9 mm) 5/16 UNF Thread | 0.23 inch (5.8 mm) | 0.94 inch (23.9 mm) | Acetal |
| GS620 | Screw Type Connector, White | Fits 3/16 inch ID Tubing (0.187 inch, 4.7 mm) 5/16 UNF Thread | 0.28 inch (7.1 mm) | 1.04 inch (26.4 mm) | Acetal |