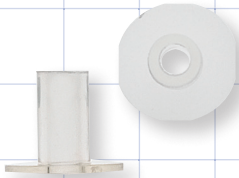
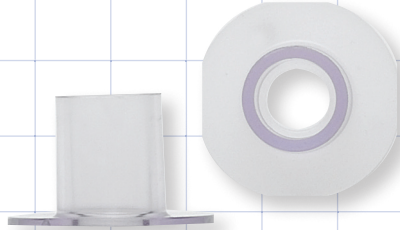


Front view

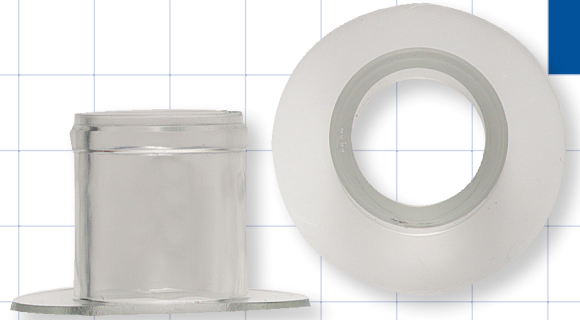
31156
Bag Port with Cover
0.287 inch - 0.39 inch Barb (7.6 mm - 10 mm)
PE



17643
0.15 inch ID x 0.25 inch OD
(3.8 mm x 6.4 mm)
Diameter: 0.612 inch (15.5 mm)
PVC



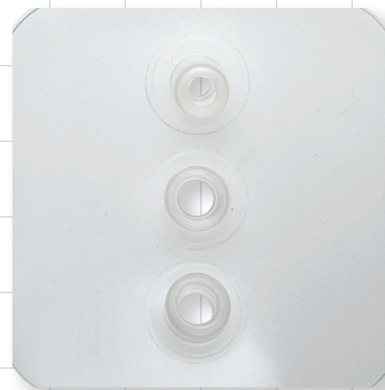
17646
0.4 inch ID x 0.5 inch OD
(10.2 mm x 12.7 mm)
Diameter: 0.98 inch (25 mm)
PVC



51525
0.87 inch OD x 0.725 inch ID
(22.1 mm x 18.4 mm)
Diameter: 1.52 inch (38.6 mm)
PVC



17644
0.14 inch ID x 0.26 inch OD; 0.2 inch ID x 0.3 inch OD
(3.55 mm x 6.6 mm; 5.14 mm x 7.725 mm)
1.2 inch x 1.82 inch Flange (30 mm x 46 mm)
PVC



17645
2 Ports: 0.2 inch ID x 0.3 inch OD; 1 Port: 0.14 inch ID x 0.81 inch OD
(5.05 mm x 7.78 mm; 3.57 mm x 6.81 mm)
1.92 inch x 1.96 inch Flange (48.8 mm x 49.7 mm)
PVC